



NIGHTHAWK

BACKLIT MECHANICAL KEYBOARD



MODEL SHOWN: NIGHTHAWK X7



MODEL SHOWN: NIGHTHAWK X8



MODEL SHOWN: NIGHTHAWK X9

NIGHTHAWK X7 / X8 / X9 USER GUIDE

Thank you for purchasing Max Keyboard Nighthawk backlit mechanical keyboard. A mechanical keyboard engineered to suit the needs of every typing enthusiast or gamers. Featuring Cherry mechanical switches, it is the perfect choice for optimizing your typing and gaming experience.

Please read this user guide to help you use the keyboard.

KEYBOARD INFORMATION

- Cherry MX mechanical key switches
- Individual backlit keys for enhanced visuals
- Backlight setting memory
- 4 level backlight modes (pulse mode on level 4)
- 128k on-board memory
- Laser engraved keycap
- N-key rollover (full NKRO on USB, any combination)
- Embedded multimedia keys
- Built in 2 high-speed USB 2.0 hub (max 100mA each)
- Built in headphone & microphone jack pass-through
- Heavy duty braided cable
- Gold plated connectors
- Tilt legs
- Windows key disabled function
- Wrist pad for maximum palm comfort
- US ANSI 104-key
- Programmable macro keys (optional downloadable software)

TECHNICAL INFORMATION

- Soft matte black upper enclosure with heavy duty braided cable
- 2 downstream USB 2.0 hub (max 100mA each)
- Individual LED on each key switch
- 50,000,000 life cycle on each key switch
- 45-50g actuation force
- Keyboard dimension: approx 17.5in x 5.7in x 1in
- Keyboard weight: approx 3 lbs
- Cable length: approx 6' foot

SYSTEM REQUIREMENTS

- Windows® 8, Windows® 7, Windows Vista®, Windows® XP
- Available USB port
- 50MB hard disk space

ELECTRICAL DATA

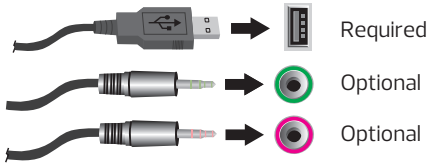
Keyboard must be plugged into your USB host port that provide 500 mA (Milliamps) at 5V (Volts). Each USB port on the keyboard will support up to 100 mA.

PACKAGE CONTENTS

- Nighthawk mechanical keyboard
- Wrist pad
- User guide

KEYBOARD INSTALLATION

1. Plug in your Max Keyboard Nighthawk into your computer USB port.
Earphone-out and microphone-in ports are optional.



2. Windows® will automatically install all the necessary driver for the keyboard.

SWITCHING ON YOUR BACKLIT KEYS

We have 4 different levels of backlighting modes for your Max Keyboard Nighthawk: LEVEL 1 (DIM), LEVEL 2 (NORMAL), LEVEL 3 (BRIGHT) and LEVEL 4 (PULSE BREATHING).

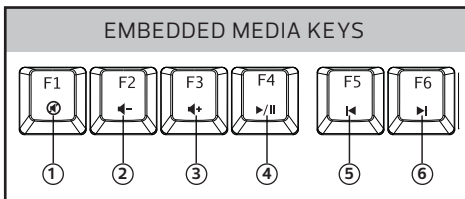


Example: To turn on your backlit keys to Level 2 brightness. Simply press "FN" key + "8" x 2 times. To lower the brightness of the backlit keys, simply press "FN" key + "2"

Note: Using the "2" and "8" on the main keyboard section will not work. You have to use the "2" and "8" located on the right hand side of the numerical keypad section (as illustration shown above).

MULTIMEDIA KEYS

There are 6 embedded multimedia keys for your convenient. Simply press "FN" Key + "F1 to F6"



- ① Mute
- ② Volume Down
- ③ Volume Up
- ④ Play/Pause
- ⑤ Previous Track
- ⑥ Next Track

Example: To mute your speakers, hold on to "FN" key and press "F1" key.

PROGRAMMABLE MACRO KEY SOFTWARE

(optional downloadable free software)

This feature is for advance user who wants to use macro key. A macro is a sequence of keystrokes executed in a particular order and timing. It allows users to execute a chain of commands, with the press of just one button.

Note: Compatible with Windows® 8, Windows® 7 and Windows® XP only.

TROUBLE SHOOTING GUIDE

SYMPTOM	POSSIBLE REASON	REMEDY
System does not recognize the USB keyboard	USB port might not have enough power output	Try a different USB port or use an USB hub with external power supply
Backlit keys do not light up	You may have used the "8" key on the main keyboard.	Please use the "8" key on the numerical keypad located on the right side.

For further questions please email us at support@maxkeyboard.com or visit our website at www.maxkeyboard.com.